

Product Information

Vision Lite Image Analysis Software



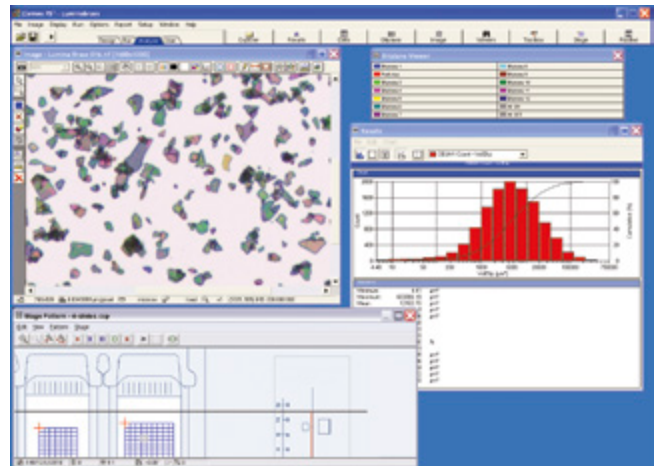
ZHVµ-A Micro Vickers hardness tester

Enhanced image analysis capabilities for your Vickers Hardness Tester

Vision Lite enables a Vickers hardness tester to provide automatic measurement of grains and phase analysis and to maximise the value of your hardness tester optics. No dedicated microscope is required.

Special features

- Automatic focus (ZHVµ-A only), exposure, illumination, shading correction
- Mosaic or scanning feature for 100% test planning and reporting
- Rapid image analysis routine development using extensive number of tools
- Results management
- Create reports
- Optional application packages are built to measure to appropriate ASTM and ISO standards



Results as they appear on screen

Intelligent work flow

Step 1: Capture Images

Monochrome digital camera analyse live or save.

Step 2: Quantify Images

Bit plane based image analysis. Use a standard routine, modify one or create your own.

Step 3: Manage Results

Measurements are directly linked to their corresponding feature on the image

Step 4: Create Report

Customise reports to your specifications easily. Use report generator module to create standard templates

System requirements

Semi-automatic (ZHVµ-S)

Recommended lenses x2.5, x10, x20, x40; manual XY table; 1.3 Megapixel digital camera; PC with Windows 7 operating system

Fully automatic (ZHVµ-A)

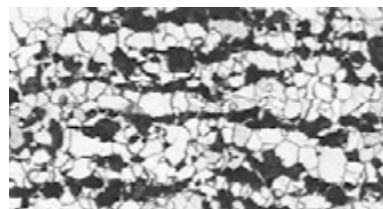
As semi-automatic, plus: motorised lead screw; motorised XY table; controller and joystick

Product Information

Vision Lite Image Analysis Software

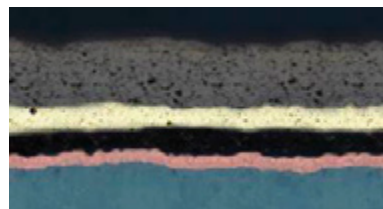
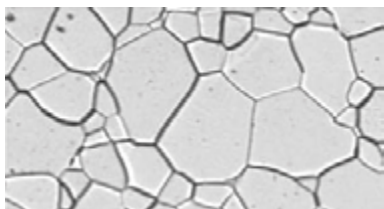
Part No.	Description	Standard
Grain Size Analysis Software		
IND15-001	Vision Lite for Image Analysis	
Application Packages (Analysis and Routine)		
IND05-200	Report generator module	
IND05-206	Grain and cell size	ASTM E112
IND05-209	Multiphase volume and area fraction analysis (porosity)	ASTM E563
IND05-211	Particle size	
IND05-215	Coating thickness	ASTM B487
IND05-229	Dendritic Arm Spacing (DAS)	
Templates and Routines (report generator included)		
IND05-221	Cast Iron for nodules	ASTM A247 & ISO 945
IND05-228	Cast Iron flakes/size/manual distribution/phases	ASTM FVII & ISO 945
IND05-222	Inclusions ratings. Methods A and D	ASTM E45
IND05-750	Inclusions ratings for the Rail Industry	ASTM E1245
IND05-227	Welding	

Phase analysis

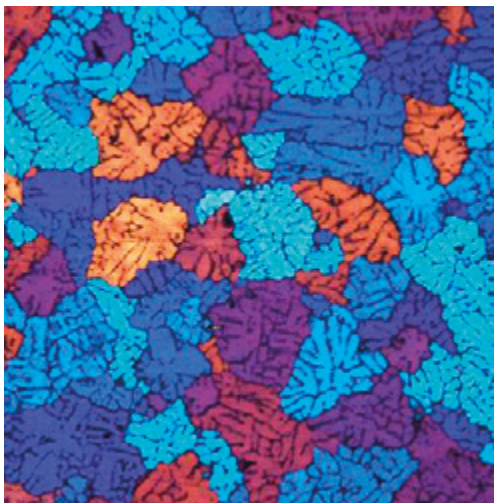


Custom applications

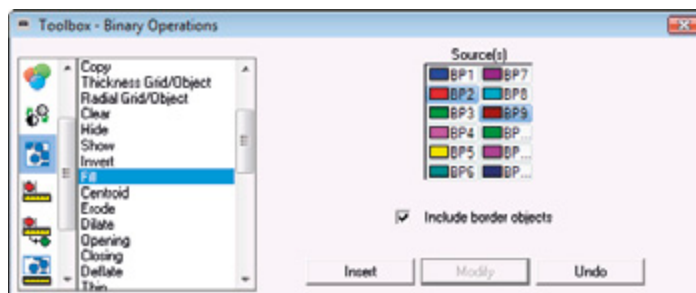
Grain sizing



Layer thickness



Aluminium with grain sizing application module



Rapid routine development